



WorldSmart Outlook Integration for Office 2007

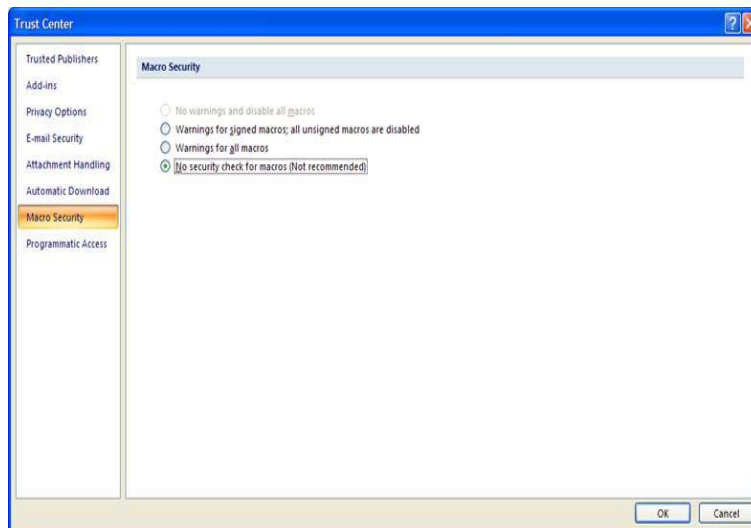
Follow the instructions to integrate WorldSmart with Outlook 2007:

1. Go to the **Tools** menu on the Messenger.
2. Click on **Options**
3. Go to **Outlook Integration** in the Options window.
4. Check the box “WorldSmart Toolbar Integration”.
5. Click **OK**.

Follow the Instructions to enable WorldSmart Outlook Plug-in in Outlook 2007:

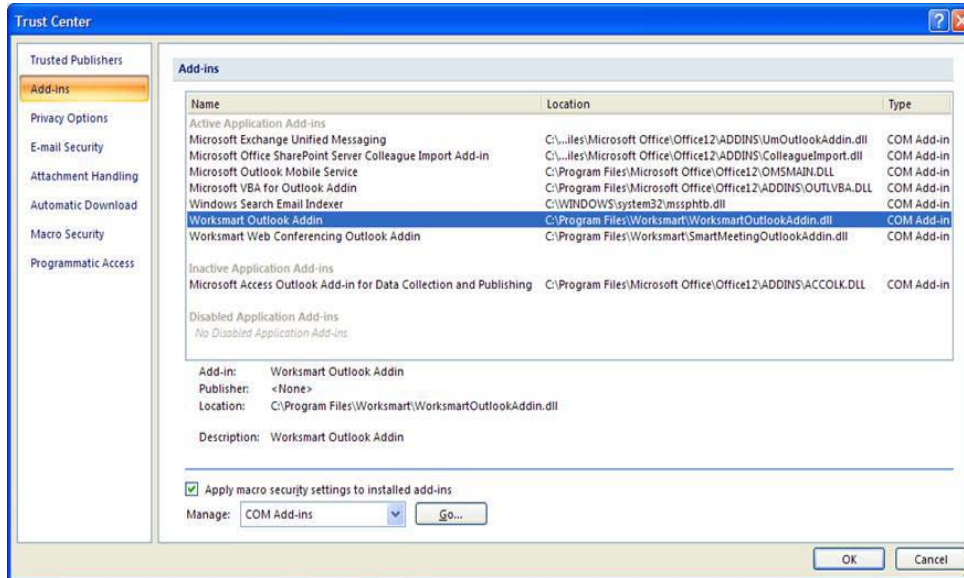
Note: This step is MANDATORY. With the above step WorldSmart Add-in will be added to outlook 2007. However, Add-in will be in inactive state.

1. To activate the Add-in click on **Tools > Trust Center > Macro Settings**.
2. Now, select the radio button “No security Check for Macros”



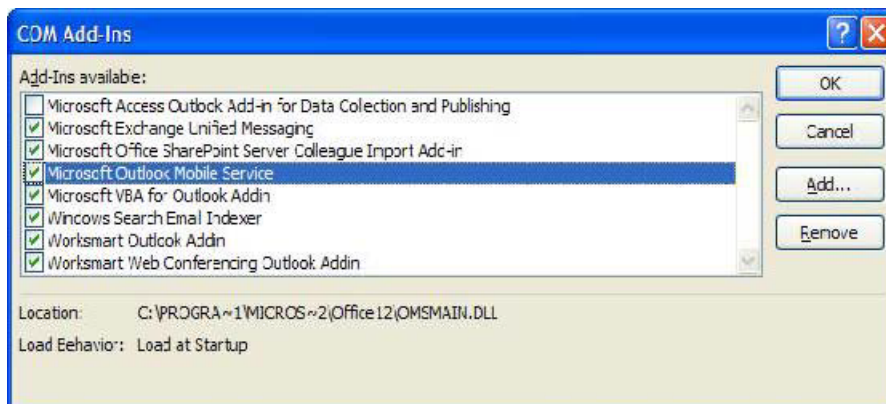
Note: By default the setting will be set to Warnings for all macros.

Now, the WorldSmart Outlook Add-in will be displayed in the add-in list.



1. If the WorldSmart Add-in is NOT displayed in the list, select COM Add-Ins in the Manage field (as shown in the figure above).
 - A. Click on GO and Uncheck the WorldSmart outlook add-in from the list of Add-in.
 - B. Click on ok.

Now, go back to the Add-in Tab of trust center and check the WorldSmart add-in check box and click **OK** again.



User should be able to see the WorldSmart tool bar integrated to outlook.

1. When Installation is complete the WorldSmart tool bar is displayed on the outlook 2007.

Note: Please close and re-open outlook 2007 and check if the WorldSmart tool bar is displayed, if the tool bar is not displayed, Go to **C:/Program files/WorldSmart** and register the dll files.



Follow the step to register these DLL's on the machine:

- Click **Start** on your computer and click **Run**. Type **regsvr32** (leave a space after typing regsvr32) and drag one of the replaced file on the run window.

```
regsvr32 "C:\Program Files\WorldSmart\WorldsmartOutlookAdd-in.dll"
```

- Click on **OK** to register the DLL. Repeat the step to register all files.